

AMSTERDAM ALTERNATIVE

About Amsterdam Alternative

Originating with the city's counterculture and free spaces, Amsterdam Alternative stands for collective action and radical political debate for the sake of a desirable future for the many, not the few.

Credits

This AA Walk has been made by: Koko Christiaanse and Phoebe Spence
Audio: Daniel Leix-Palumbo

AA WALK

#01 CENTRE-EAST



Welcome to the first Walk of Amsterdam Alternative. This route takes you past a few still existing and a couple of free spaces and squats that have been evicted in the past. It starts in the centre and ends in the east.

Walking duration: ±1,5 hrs.

Average duration per stop: 4-6 minutes.

Total duration: ±2,5 hrs.

Audio file: www.amsterdamalternative.nl/gallery/podcasts

Route: goo.gl/maps/N939dF3yF8BXvwfi6

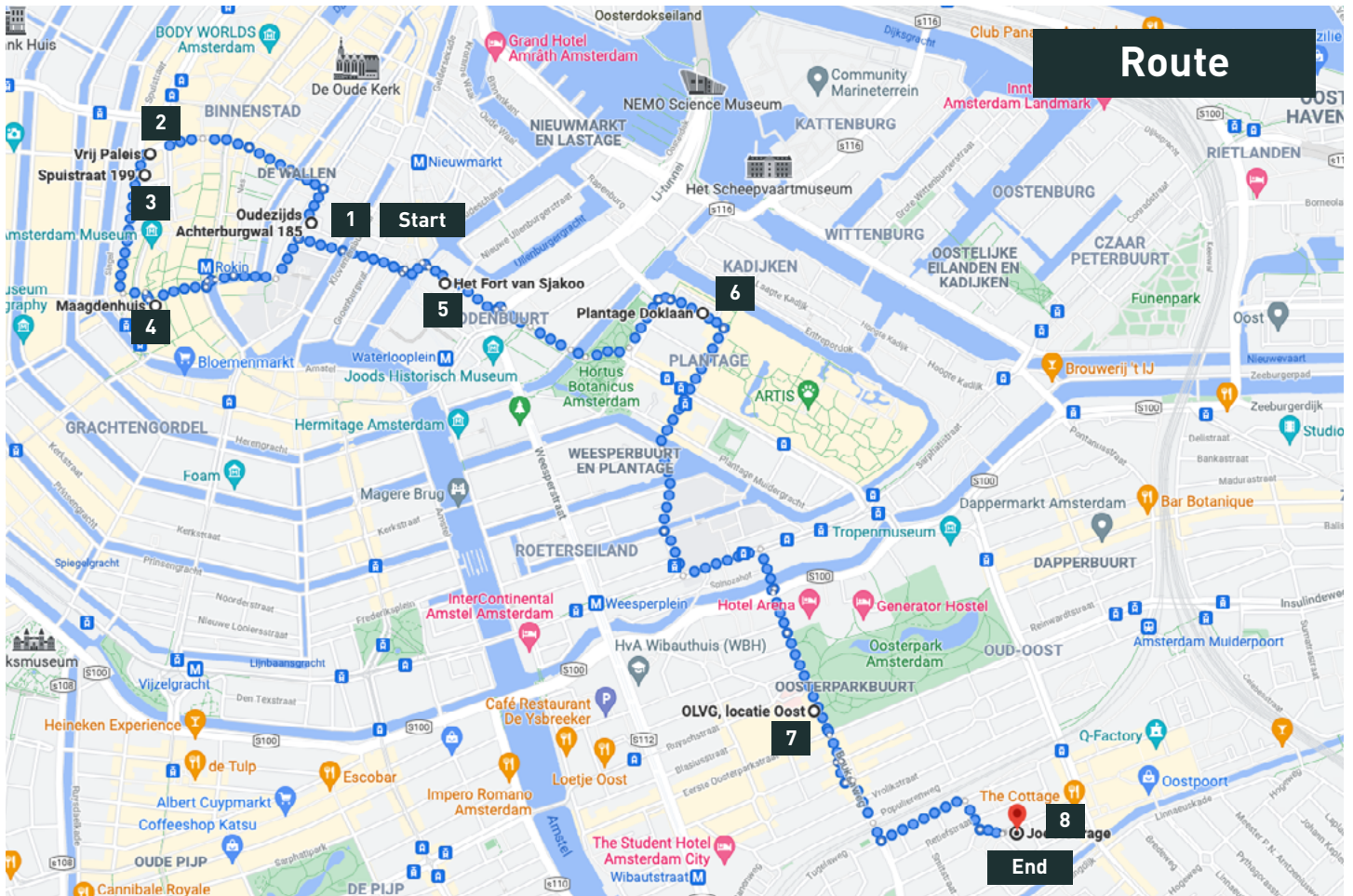
Instructions:

Click 'Route' above for a Google maps link.

Click 'Info' link for the audio file to listen to.

This pdf document is meant to function as an extra guide with pictures, addresses and route description. Keep in mind that you need an internet connection to stream the audio files from Soundcloud and follow the route on Google maps.

AMSTERDAM ALTERNATIVE



On this walk you'll go past a couple free spaces that still exist and a couple that have been evicted in the past.

1) Spinhuis
Oudezijds Achterburgwal 185

2) Vrijpaleis
Paleisstraat 107

3) De Slang
Spuistraat 199

4) Maagdenhuis
Spui 21

5) Het Fort van Sjakoo
Jodenbreestraat 24

6) PlantageDok
Plantage Doklaan 8

7) OLVG
Oosterpark 9

8) Joe's Garage
Pretoriusstraat 43

AMSTERDAM ALTERNATIVE

Route description

Start

Spinhuis

Oudezijds Achterburgwal 185

Walk northeast on Oudezijds Achterburgwal, towards Korte Spinhuissteeg (100 m)

Turn left onto Oude Doelenstraat (100 m)

Follow the road to Damstraat (140 m)

Continue straight on the Dam (130m)

Follow the road to the Palace Street (160 m)

VrijPaleis Paleisstraat 107

Walk west on Paleisstraat, towards the Spuistraat (26 m)

Turn left onto the Spuistraat (55 m)

De Slang Spuistraat 199

Walk up north the Spuistraat, towards the Empire (2 m)
Cross (350 m)

Turn left to the Spui (65 m)

Turn right to stay on the Spui (22 m)

Turn left onto the Spui to stay. you find you destination right (13 m)

Maagdenhuis Spui 21

Walk east on the Spui, towards the Voetboogstraat (150 m)

Turn left onto the Rokin (21 m)

Turn right onto Rokin to stay (25 m)

Follow the road to the Langebrugsteeg (49 m)

Follow the road to the Grimburgwal (120 m)

Turn left onto Oudezijds Achterburgwal (120 m)

Turn right to the Russia (130m)

Follow the road to the Raamgracht (170 m)

Turn left onto Zwanenburgwal (19 m)

Turn right to Sint Anthoniesluis/Sint Anthoniessluis/Sint Anthoniessluis/Zwanenburgwal
Take the stairs (79 m)

Turn right onto Sint Anthoniesluis/Sint Anthoniessluis/Sint Anthoniesbreestraat/Sint Anthoniessluis/Sint Anthoniessluis (19 m)

Follow the road to the Jodenbreestraat. You will find your destination on the right (62 m)

Het Fort van Sjakoo Jodenbreestraat 24

Walk to the southeast on the Jodenbreestraat, direction Houtkopersdwaarsstraat (160 m)

Turn left to the mr. Fisherman's Square (22 m)
Take the zebra crossing (98 m)

Slight bend to the right towards the Hortusbrug / Plantage Middenlaan (130 m)

Follow the road to the Hortus Bridge / Plantage Middenlaan
Continue on Plantage Middenlaan (50 m)

Slight left to stay on Plantage Middenlaan (130 m)

Slight bend to the left to Plantage Parklaan (150 m)

Turn right to stay on Plantage Parklaan (36 m)

Follow the road to the Plantation Doklaan (100 m)

PlantageDok Plantage Doklaan 8

Walk southeast on Plantage Doklaan, towards Plantage Kerklaan (77 m)

Turn right onto Plantage Kerklaan (400 m)

Follow the road to the Roetersstraat (230 m)

Slight bend to the left to stay on Roetersstraat (130m)

Turn left onto the Sarphati Street (230 m)

Turn right onto Korte 's-Gravesandestraat (130 m)

Turn right onto Mauritskade/S100 (91 m)

Turn left onto Sajet Square (82m)

Turn left onto Mary Zeldenruststraat (95 m)

Turn right onto 's-Gravesandestraat (27 m)

Follow the road to the Oosterpark (40 m)

Turn right onto Tweede Boerhaavestraat (190 m)
Cross (190 m)

Turn right to Oosterpark. You will find your destination on the right (250 m)

OIVG

Oosterpark 9

Walk southeast on Oosterpark, towards Eerste Oosterparkstraat (14 m)

Follow the road to the Beech Road (80 m)

Turn right onto Tweede Oosterparkstraat (18 m)

Turn left to the Beech Square (61 m)

Turn left onto the Third Oosterparkstraat (18 m)

Turn right onto the Beech Road (140 m)

Follow the road to the Maritz Street (56 m)

Turn left onto Tugelaweg 260 m

Turn right onto the Laing's Nekstraat (97 m)

Turn left to the Steve Biko Square (62 m)

Follow the road to the Pretoriusstraat. You will find your destination on the right (42m)

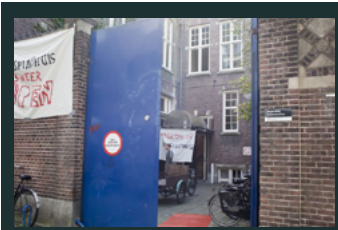
Joe's Garage

Pretoriusstraat 43

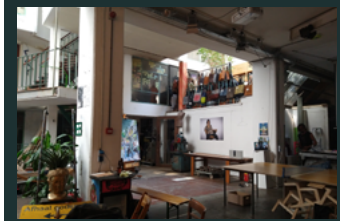
End

AMSTERDAM ALTERNATIVE

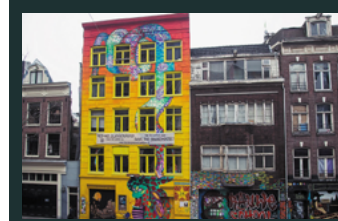
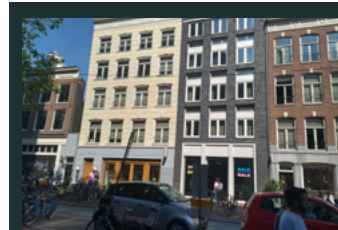
Some old and new pictures of the buildings in this tour. Just to be able to recognize what you are looking for and to see what it looked like in the past.



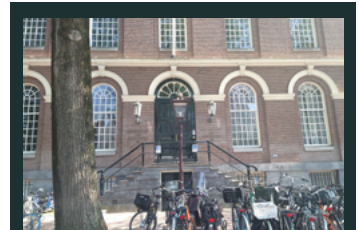
1) Spinhuys
Oudezijds Achterburgwal
185



2) VrijPaleis
Paleisstraat
107



3) De Slang
Spuistraat
199



4) Maagdenhuis
Spui
21



5) Het Fort van Sjakoo
Jodenbreestraat
24



6) PlantageDok
Plantage Doklaan
8



7) OLVG
Oosterpark
9



8) Joe's Garage
Pretoriusstraat
43